



Advantage Cremation Care
of Greater Cincinnati
By Tufts Schildmeyer

Serving all of Greater Cincinnati

Phone (513) 575-7332
Fax (513) 683-9632

Web: www.cremationcincinnati.com
Email: info@cremationcincinnati.com

Our Offerings and General Price List

*These prices are effective January 1, 2024
And are subject to change without notice.*

Thank you for choosing Advantage Cremation Care of Greater Cincinnati. Families should have choices and receive dignified care even if they choose simpler arrangements.

Our mission is simple, *To offer an alternative to traditional funerals and to provide affordable services that can be personalized prior to death or by the family or loved ones.*

This General Price List outlines the services and merchandise that we can provide to you, along with our current prices. From it, you may select the type of services you desire. For additional information, please consult our website at <http://www.cremationcincinnati.com> or contact us at (513) 575-7332.

METHOD OF PAYMENT

Payment for goods and services is expected at the time of arrangements and required prior to the services rendered. For your convenience we accept cash, credit card (Visa, Mastercard, Discover or American Express) or a valid insurance policy (subject to \$250 paperwork processing fee).



General Price List



These prices are effective January 1, 2024 and are subject to change without notice. The goods and services shown below are those we can provide to our customers. You may choose only the items you desire. However, any funeral arrangements you select will include a charge for our basic services and overhead. If legal or other requirements mean you must buy any items you did not specifically ask for, we will explain the reason in writing on the statement we provide describing the funeral goods and services you selected.

Package Options

Simple Direct Cremation.....\$895

This discounted package includes basic services of director/staff, transfer from place of death within a 25 mile radius, temporary refrigeration of remains, securing necessary authorizations and permits, cremation fee and basic cremation container for cremation.



Witnessing Direct Cremation.....\$1095

This discounted package includes basic services of director/staff, transfer from place of death within a 25 mile radius, temporary refrigeration of remains, witnessing at cremation center during cremation process, securing necessary authorizations and permits, cremation fee and basic cremation container. Includes Monday - Friday witnessing during normal business hours at our cremation center.



Private Viewing Direct Cremation.....\$1395

This discounted package includes basic services of director/staff, transfer from place of death within a 25 mile radius, temporary refrigeration of remains, securing necessary authorizations and permits, cremation fee, basic viewing container for cremation and private family viewing prior to cremation at our care facility (1 hr. max, Mon-Fri during normal business hours).



What to Expect



Call us to report your loved one's death

OR

With any questions you may have

Our licensed staff will work closely with you on the cremation process

We will coordinate transporting your loved one to our care facility

We will work closely with you to gather necessary statistical and signatures

Cremation will be performed

AT OUR OWN CREMATION CENTER

You will be contacted when the cremated remains can be picked up at our care facility.

Ohio Law & Cremation

1. A cremation cannot take place during the first 24 hours after death.
2. A cremation cannot take place without the signed authorization on the Ohio Death Certificate by the attending physician of the deceased.
3. State Registrar must issue a cremation permit prior to cremation.
4. State of Ohio requires an authorization for cremation be signed and initialed by the legal next of kin.
5. Prior to cremation, a form of identification must take place.

Our Cremation Center

At Advantage Cremation Care by Tufts Schildmeyer, we operate our own state of the art cremation facility that is impeccably clean and secure. We are licensed and regulated by the State of Ohio, Environmental Protection Agency (EPA), Occupational Safety Health Administration (OSHA), Cremation Association of North America (CANA), and the Ohio State Board of Funeral Directors and Embalmers. Many other funeral Homes in our general service area sub-contract their cremation services to non-regulated, non-licensed and non-certified crematories that operate within the confines of concrete fabrication factories or in warehouses, garages, or cemeteries.

Advantage Cremation Care by Tufts Schildmeyer adheres to strict standards such as the Cremation Code of Ethics by CANA, Certified Operators, Licensed Personnel, and the encouragement of a family's personal inspection. We are the first to offer special "witnessing" in our crematory that allow family members to be present at the start of the cremation process. We follow a strict tracking system that ensures each cremation is done without errors. We constantly monitor our tracking system and continue to maintain an A plus rating.



Miscellaneous Charges

ID Viewing (private family, 1 hour max, minimal preparation, in Private ID viewing room.....	\$500
Witnessing of Cremation at Own Crematory (Mon—Fri).....	\$200
Witnessing of Cremation on Saturday Overtime	\$200
Additional Transportation Fee (over 25 mile radius).....	price by quote
Additional fee for deceased weighing over 350 lbs.....	\$200
Crematory Fee for Standard Cremation (already included in our basic cremation price).....	\$300
Ohio Certified Copy of Death Certificate.....	\$35 per copy
Ohio Death Certificate Affidavit Filing Fee.....	\$35 per copy
Kentucky Certified Copy of Death Certificate.....	\$20 per copy
Ohio Burial Permit.....	\$3.00
Ohio Sales Tax.....	7.8% on merchandise
Newspaper Death Notices.....	as quoted by newspaper

Disposition Charges

Release of Cremated Remains to Responsible Party at Advantage Cremation Care Office.....	\$No charge
Scattering of remains at our private scattering garden.....	\$50.00
Mailing or Shipping of Temporary Urn Container - (Priority Express USPS).....	\$125.00
Mailing or Shipping of Urn - (Priority Express USPS).....	price as quoted by USPS
Delivery to Residence.....	\$100.00
Placement of Cremated Remain in Urn/Jewelry Provided by Family.....	\$25.00
Cremated Remains Storage.....	\$10.00/day
(For storage of cremated remains commencing the 60th day after cremation (per day))	

Merchandise Charges

Casket selection range: (A complete price list will be provided at the funeral home)

Alternative Container Selection Range (*already included in cremation packages*) From **\$100** to **\$605**

Urn selection range: (A complete price list will be provided at the funeral home)

Urn Selection Range From **\$25** to **\$395**

Disclaimer of Warranty: The only warranty of the casket or any merchandise sold in connection with this service is the express written warranty, if any, granted by the manufacturer. THIS FUNERAL HOME MAKES NO WARRANTY, EXPRESS OR IMPLIED, INCLUDING AND IMPLIED WARRANTY OF MERCHANTABILITY AND AN IMPLIED WARRANTY OF FITNESS FOR A PARTICULAR PURPOSE, WITH RESPECT TO THE CASKET AND/OR OUTER BURIAL CONTAINER.

Itemized Services

We believe it is in your best interest to have a clear understanding of the services available to you and of our fees for providing those services. The enclosed General Price List has been assembled for your convenience. This price list will be a guide for you offering a complete description of the services offered and their specific costs. Please use this as a guide as you select the services desired for your loved one.

These disclosures are made in compliance with the requirement and guidelines set forth by the Federal Trade Commission's funeral service regulation rule. Prices have been computed in accordance with generally accepted pricing practices. This General Price List is available for retention. These prices are subject to change without notice. This list does not include prices for certain items that you may ask us to buy for you such as cemetery services, flowers, newspaper notices, honorariums to clergy, certified copies, sales tax and others. The price for those item will be shown on your bill or the statement describing the funeral goods and services you selected.

Professional Services

Basic Services of Funeral Director & Staff.....\$895

Our basic service fee includes, but is not limited to staff and facilities to respond to initial requests for service 24 hours every day, consultation with the survivors, coordinating service plans with cemetery, crematory and /or other parties involved in the final disposition of the deceased, sheltering of the deceased, consultation and assistance with procuring various death benefits, securing necessary permits, accounting and billing, regulatory compliance, legal and audit fees, postage, printing and supplies, telephones, insurance, salaries and benefits for our staff, various county, state and federal taxes and fees. This fee for our basic services and overhead will be added to the total cost of the funeral arrangements you select. (This fee is already included in our charges for direct cremations)

Refrigeration.....\$395

Includes refrigeration and sheltering of the remains for bodies not embalmed until final disposition.

Other Preparation.....\$200

Includes dressing the remains of the not embalmed body for private identification viewing.

Transportation

Transfer of Remains to Funeral Home.....\$395

Includes the local (within a 25 mile radius of Advantage Cremation Care) removal of the remains from the hospital, nursing home, residence, coroner's office or hospice. Additional distances outside of our normal service area will be price by quote only based on distance.

Facilities

Our services include ceremony setup and equipment, display of floral arrangements, supervising and coordinating the ceremony, attending to the family needs.

Setup, Equipment & Staff for a Memorial Service.....\$1195

Includes the setup and use of a memorial service gathering during Monday through Friday.

Overtime for Saturday & Sunday Services.....\$500

Additional Service Options

Body Donation Services.....\$795

This service includes the removal from place of death, refrigeration, transfer to UC Medical Center and our basic services of staff.

Minimum Care Services

Direct Cremation.....\$1595

This charge includes removal of remains, refrigeration of remains, basic sanitation for ID viewing, securing necessary authorization and permits, single representative of the family for identification, local transportation to the crematory and basic services of staff. This charge does not include any rites or ceremonies, cremation permit, Cremation fee, or urn for containment of cremated remains. If you would like to arrange a direct cremation, you may use an alternative container. Alternative containers encase the body and can be made of materials like fiberboard or composition materials.

Urn Price List

Prices effective 1/1/2024 and
Subject to change without notice

All Urns are \$225.00



*



*



*



*



*



*

Antique English Black Gold Classic Pewter Camouflage Cardinal Going Home Ocean Waves



*



*



*



*



*

Adria Chestnut Adria White Avondale Slate Avondale Copper Avondale Butterfly Family Tree



*



*



Hummingbird Raku Modern White Dove Barbados Caroline Statesman

Cultured Marble Urns (Single \$225—Companion \$375)



Amethyst



Syrocco



White



Mystic Blue



Cobalt Blue



Ebony—shown as companion



Navy



Wild Rose



Rose



Emerald



Wedgewood



Cashmere Gray

* Designates in stock item. Please allow 2 business days for other shown urns.

Urn Price List

Advantage Cremation Care

www.cremationcincinnati.com

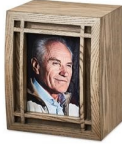
Phone (513) 575-7332

Prices effective 1/1/2024 and
Subject to change without notice

All Urns are \$225.00



Tilia



Mission Photo



Fresh Flight



Avondale Russet



Bobber Urn



Elegance



Modern Flag



Purple Butterfly



Blue Rose



Green Leaf



Classic Pink Rose



Regal



Golf Ball Urn

green product



Journey



Mother of Pearl



Sparta Purple



Elite Flag



Midnight Iris



Artisan Blue



The Living Urn

* Designates in stock item. Please allow 2 business days for other shown urns.

All Legacy Urns are \$295.00



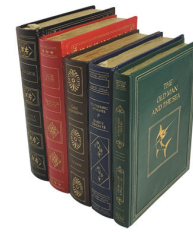
Motorcycle Gas Tank



Metro Mantel



Adore Bronze



Bookshelf



Ohio State



Tulip Purple



Simplicity Midnight



Simplicity Walnut



Living Urn Indoor



Nirvana Adieu

All Full Size Eco Urns are \$125.00



Bamboo Eco

*



Ocean Sunset

*



Ascending Dove

*



Patriot

*



Autumn Woods

*



Wildflowers

*



Golf

*



Daisy

*



Tree of Life Economy Wood Urn

* Designates in stock item. Please allow 2 business days for other shown keepsakes & urns.

Keepsakes & Tributes

All Keepsake Urns are \$50.00

**** These urns only hold a small portion of the cremains**



Classic Pewter * *Going Home* * *Adria Chestnut* * *Raku* * *Mother of Pearl* * *Fresh Flight* * *Classic Pink Rose* * *Sparta Purple* * *Midnight Iris* * *Elegance* * *Modern Flag* * *Hummingbird* * *Modern Dove* * *Camo*



Avondale Slate * *Avondale Copper* * *Teal Butterfly* * *Avondale Russet* * *Antique English* * *Blue Rose* * *Adria White* * *Black Gold* * *Statesman* * *Cardinal* * *Green Leaf* * *Purple Butterfly* * *Guitar* * *Elite Flag* * *Ocean Waves* * *Family Tree*

All Legacy Keepsake Urns are \$95.00

**** These urns only hold a small portion of the cremains**



Ohio State * *Nirvana Adieu* * *Tulip Purple* * *Cultured Marble (several colors)* * *Butterfly Glass* * *Adore Bronze* * *Simplicity Midnight*

All Legacy Keepsake Candles are \$95.00

**** These urns only hold a small portion of the cremains**



Nirvana Adieu * *Mother of Pearl* * *Simplicity Midnight* * *Flying Doves*

* Designates in stock item. Please allow 2 business days for other shown keepsakes & urns.

Cremation Jewelry Pendant Options

(All pendants are \$95 includes SS necklace—Snake Chain \$25 Additional)



029



034



051



058



Q



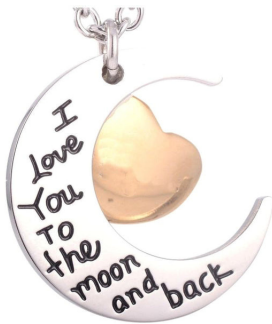
025



053



056



N



032



059 Mom

024Dad



088



028



022



065



092



008



046



066



097

Cremation Jewelry Pendant Options

(All pendants are \$95 includes SS necklace—Snake Chain \$25 Additional)



1A



R



070



096



093



043



M



T



016



011



010



047



014



K



035



001



018



V



1B



Snake Chain 20" or 24"
\$25 each

\$25

*This is a time to cherish.
It's a time to come together
in tribute and thanksgiving.*

And to memorialize for all time,

*The gifts of one precious
Life.*

Contact Us

513-575-7332

info@cremationcincinnati.com



www.cremationcincinnati.com

Copyright @ Advantage Cremation Care by Tufts Schildmeyer
Print Rev.2-24